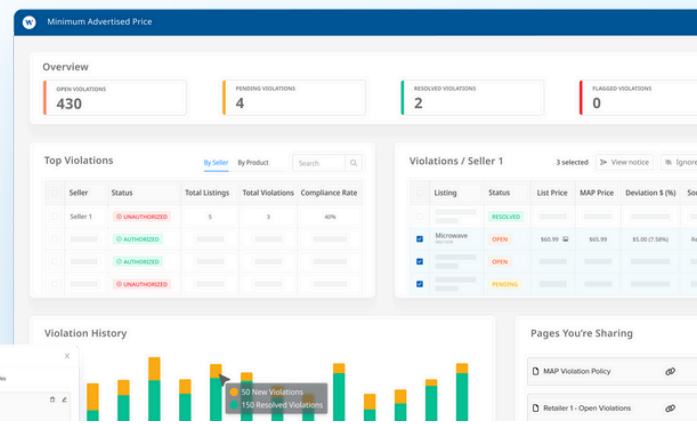


MAP Intelligence: Promo MAP

Track and manage promotional pricing with confidence



Need visibility into promotional exceptions?

Promo MAP makes it easy to upload promotional prices, validate your file, and track every promo through its lifecycle. Spot conflicts before they go live and keep compliance clear even during campaigns.

Stay Aligned

Maintain compliance during every campaign.

Catch Flags Early

Validation and conflict checks prevent mismatches.

Track Status Clearly

Know whether promos are scheduled, running, or ended.

The setup form includes fields for 'Promotion name' (set to 'Fantastic Promd'), 'Promotional period' (2025-10-02 to 2025-10-03), and 'Currency' (USD). A 'Products' section contains a warning: 'Our template must be used for products to be correctly matched' with a 'Download template' link. Below is a large area for uploading a file, with instructions: 'Click or drag filled template to this area to upload' and 'Max file size: 5 MB'.

1. Upload Your File

- Use the provided template to list products, SKUs, and promo MAP prices.
- Drag and drop your file into Promo MAP to start validation.

Tip: Test the workflow with a small file and get comfortable before uploading full campaigns.

This screen displays validation results: '2 product(s) couldn't be matched and won't be included in this promotion.' and '1 product(s) are in conflicting promotions and won't be included in this promotion.' It shows a table of 'Available & Conflict.csv' with 7 products. A summary bar indicates 'Matched (4)', 'Conflict (1)', and 'Not Found (2)'. A table below lists product details:

Product	Description	MAP	Promo MAP
		\$1,398.00	\$999.00
		\$2,498.00	\$1,499.00
		\$3,598.00	\$1,749.49

2. Validate & Check Conflicts

- The system automatically sorts products into Found, Conflict, or Not Found.
- Resolve conflicts or re-upload before promotions go live.

Tip: Use conflicts as a signal. They can highlight mismatched SKUs or overlapping promos that need quick cleanup.

The 'Promotions' view shows a table with columns for 'Promo name' and 'Status':

Promo name	Status
Thanksgiving Promo	Scheduled
October Promo	Running
March 19 - March 20 2025	Ended
promo	Ended

3. Track Promo Status

- Every promo moves through a clear lifecycle: Scheduled → Running → Ended.
- While scheduled, you can edit or replace your file. Once running, end it first to make changes.

Tip: Plan promos early so you have time to fix conflicts before the campaign date.

The 'Monitored' view shows a table with columns for 'Name', 'Status', 'MAP', 'Total Listings', and 'Total Sellers':

Name	Status	MAP	Total Listings	Total Sellers
	Monitored	\$1,398.00	170	58
	Monitored	\$1,148.00	72	35
	Monitored	\$1,148.00	72	35
	Monitored	\$1,148.00	72	35
	Monitored	\$4,699.00	119	41
	Monitored	\$3,400.00	215	55
	Monitored	\$2,700.00	158	37

A tooltip for the 'October Promo' entry shows: 'October Promo Oct 1 - Oct 31 Previous price \$4,798.00'.

4. Monitor With Confidence

- Promo pricing is tracked alongside standard MAP monitoring.
- You will always know when an exception is in play and when it ends.

Tip: Use promo reporting to show leadership that compliance is being managed even during sales events.