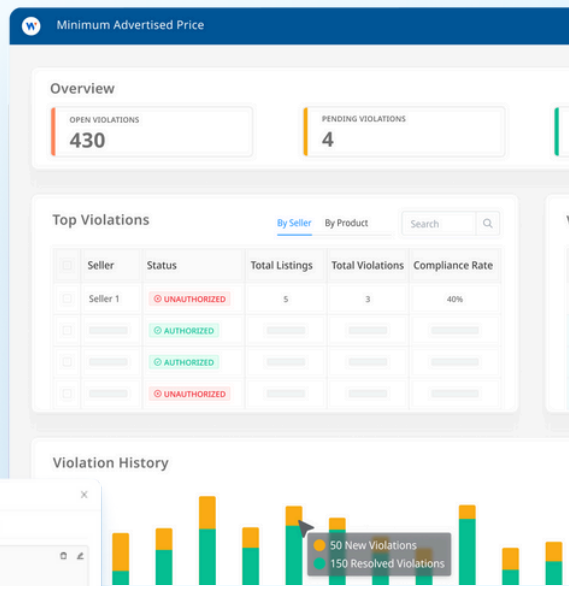




Introducing: MAP Intelligence

The next evolution in MAP Enforcement: Faster navigation, clearer evidence, and scheduled reporting.

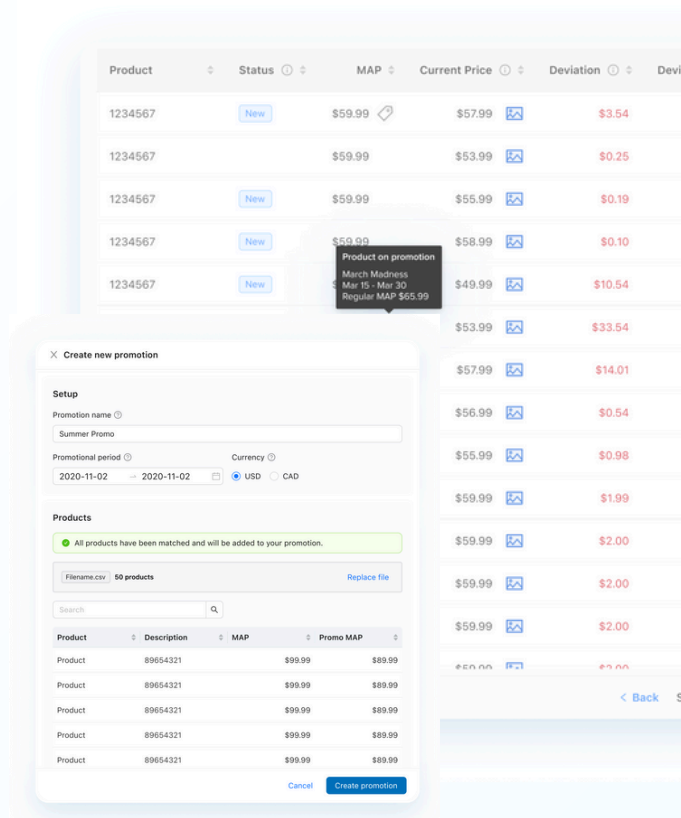


What's New & How It Works

- Modernized User Interface**
 Clean layout and fewer clicks help you find answers and take action quickly.
- Consistent Experience**
 Table sorting, filters, and sidebar settings persist across sessions.
- Proof at a Glance**
 Screenshots and historical records support audits and long-term MAP tracking.
- Simplified Reviews**
 Violations are grouped by seller and product for quick investigations.
- Custom Delivery**
 Tailor report filters and columns, schedule daily or weekly reports, and receive them as early as 8 AM EST.
- Promotions Visibility**
 Plan, monitor, and review scheduled, active, and past promotions to ensure compliance and confirm price reversion.

The Results You Can Expect

- Protect Brand Value and Profitability**
 Consistent pricing across channels safeguards both reputation and margins.
- Boost Compliance Resolution Rates**
 Clear, documented proof accelerates cooperation and case closure.
- Maximize Promotional ROI**
 Ensure every promotion drives sales without cutting into margins.
- Increase Team Productivity**
 Scheduled reporting reduces manual work so teams can focus on strategy.
- Resolve Issues Before They Impact Sales**
 Faster workflows mean violations are addressed before they hurt revenue.



Give it a try! See how MAP Intelligence simplifies violation review and reporting.